



Devon  
Community  
Wildlife  
Toolkit



# Devon Community Wildlife Toolkit



Sea, estuaries, rivers, moors, heaths, woods, dormice, otters, dragonflies, cirl buntings, horseshoe bats, grey seals, marsh fritillary butterflies, Atlantic salmon, primroses.....


Devon supports an outstandingly rich and varied range of wildlife habitats and species and it is up to all of us to ensure that we conserve our natural environment for future generations.

This toolkit has been put together to help you and your community do your bit for Devon's wildlife. First browse from cover to cover to get a feel for subject - you probably know a lot already, but understanding the bigger picture is the key to a successful project. Use the Toolkit to get some ideas about what you could do, how to go about it and the do's and don'ts of an interest in wildlife; then use the internet links to get into the detail, find help and more ideas. **We want to ensure that the toolkit is as helpful as possible so please send through any suggestions for improvements, extra information and tell us about the project you are undertaking to [nature@devon.gov.uk](mailto:nature@devon.gov.uk).**





<b>Section 1</b>	<b>Ideas for projects</b>
	<ul style="list-style-type: none"><li>a. Produce a wildlife map using existing information and simple surveys</li><li>b. Undertake wildlife surveys</li><li>c. Carry out habitat management or habitat creation projects</li><li>d. Improve access to your natural environment</li><li>e. Investigate links between the landscape, historic environment and wildlife</li><li>f. Improve understanding of your natural environment</li><li>g. Encourage people to use their natural environment - get out there!</li></ul>
<b>Section 2</b>	<b>Examples of projects</b>
<b>Section 3</b>	<b>Existing wildlife groups</b>
<b>Section 4</b>	<b>Wildlife priorities in Devon</b> (Biodiversity Action Plans, designations, legislation etc)
<b>Section 5</b>	<b>Practicalities</b> (organisation, funding, insurance, safety etc)
<b>Section 6</b>	<b>Contact details</b>
<b>Acknowledgements</b>	



Section 1  
**Ideas for Project**

## Section 1: Ideas for projects



### Produce a wildlife map

Producing a Wildlife Map which shows habitats, species, nature reserves etc will tell you more about the distribution of wildlife in your area, and may give you ideas for further projects.

Devon Wildlife Trust website has some useful information on species and habitats in Devon. Go to <http://www.devonwildlifetrust.org/> and click on 'Wildlife in Devon'.

Your map could include:

- wildlife habitats such as woodlands, rivers, ponds, churchyards, heathland, scrub, hedges, large old trees, interesting road verges etc.
- 'priority' wildlife habitats or designated sites e.g. Sites of Special Scientific Interest (SSSI) and County Wildlife Sites (CWS). [See Section 4](#) for more information on these.
- nature reserves e.g. sites managed by RSPB, DWT, Woodland Trust, National Trust and Local Nature Reserves
- species (note that it may not be possible, or appropriate, to show the exact location of species). [See Section 4](#) for more information on protected and priority species.
- location of invasive species such as Japanese knotweed and Himalayan Balsam.
- photographs (current and old) of habitats and landscapes
- text to describe habitats and species found as well as any known issues.
- Illustrations ~ some parishes have produced beautifully illustrated wildlife maps.



The Sharpham Trust has used Google Earth to produce interactive maps of the Estate showing wildlife and historic information. To find out more go to <http://www.sharphamtrust.org/page.php?id=288>

## Base maps

Useful maps are available from:

- Ordnance Survey - [www.getamap.co.uk](http://www.getamap.co.uk) (OS Explorer maps at 1:25,000 scale are particularly useful as they clearly show field boundaries, rights of way and habitats such as woodland). Please remember to obey copyright and licensing laws when using OS maps.
- Google earth - [www.earth.google.co.uk](http://www.earth.google.co.uk)

## Collating existing wildlife information



*Devon Biodiversity Records Centre (DBRC)* forms part of Devon Wildlife Trust and verifies and collates wildlife records from survey work and the public. DBRC can provide (at a small charge) a map of your parish showing all designated sites (such as Sites of Special Scientific Interest and County Wildlife Sites) and any records of species, priority habitats and Japanese knotweed. DBRC may also be able to provide current and past aerial photographs for your parish which can show you how wildlife habitats and landscapes have changed over the years.

Contact DBRC directly (see [Section 6](#)) or fill in their data request form at <http://www.dbrc.org.uk/finding-out-about-devons-wildlife-and-geology/>. Remember that the species and habitat records provided will not be comprehensive. This gives you a great opportunity to help fill in the gaps and help DBRC to build up a better picture of wildlife in Devon.

There are also a number of websites with maps showing wildlife sites and species, such as:

- The Devon Green Infrastructure map (shows designated wildlife sites) at, <http://gis.devon.gov.uk/basedata/viewer.asp?DCCService=greeninfra>.
- Natural England's interactive mapping website, Nature on the Map, <http://www.natureonthemap.naturalengland.org.uk/>
- The National Biodiversity Website, <http://www.nbn.org.uk/>

### *Is there an existing wildlife audit for your parish?*

From 2008 - 2010 Devon County Council and the Devon Biodiversity Partnership funded the production of around 40 parish



Wild Pansy

audits across the county. These audits were produced by wildlife consultants using information from DBRC and a day surveying the parish. The audits include maps, descriptive text, photographs and suggestions for local action. Audits can be found at <http://www.devon.gov.uk/parishaudits.htm> or by emailing [nature@devon.gov.uk](mailto:nature@devon.gov.uk)

Devon Wildlife Trust has also produced detailed parish audits in order to inform conservation work in the Working Wetlands (Culm) area of Devon and the Avon Valley. Audits are available at the link above or through contacting DBRC.

### ***Information on the condition of wildlife habitats***

- Information on the condition of **Sites of Special Scientific Interest** is available from Natural England and can be obtained directly from their website at <http://www.sssi.naturalengland.org.uk/Special/sssi/search.cfm>
- Information on the condition of some **County Wildlife Sites** is available from DBRC. Please note that there may be a small charge for this information and that detail on individual sites may not be available due to confidentiality issues.
- Information on the state of **Devon's rivers** is available at, <http://www.swenvo.org.uk/earth-chattering/briefings/>

## **Undertaking wildlife surveys**

### ***Get involved in local surveys***

Organisations such as Devon Wildlife Trust, RSPB, Barn Owl Trust and local wildlife groups are often looking for help with surveys e.g. in 2011 DWT set up its 'help the hog' campaign to find out more about Devon's hedgehogs. Local organisations and groups also run courses in identification skills. See Section 3, contact organisations or see websites listed in Section 6, for details of any current projects.

### ***Get involved in national surveys***

Many of the national wildlife organisations listed in [Section 6](#) run surveys specifically aimed at involving non experts. Examples include:

RSPB's *Big Garden Birdwatch*: [www.rspb.org.uk/birdwatch](http://www.rspb.org.uk/birdwatch)

Bat Conservation Trust's *Big Bat Map Project* - [www.bats.org.uk/big\\_bat\\_map.php](http://www.bats.org.uk/big_bat_map.php)

Butterfly Conservation's *Big Butterfly Count* - [www.butterfly-conservation.org/article/9/256/the\\_biggest\\_ever\\_butterfly\\_count.html](http://www.butterfly-conservation.org/article/9/256/the_biggest_ever_butterfly_count.html)



People's Trust for Endangered Species, *The Great Nut Hunt* -  
<http://www.ptes.org/index.php?cat=6>

The Norfolk Wildlife Trust has produced a community guide to surveying wildlife. See <http://www.norfolkwildlifetrust.org.uk/Things-to-do/Wildlife-toolkit.aspx>. Be aware that not all species referred to in this document will be found in Devon!

Simple guidance for carrying out your own surveys in Devon is being developed and information can be found at <http://www.devon.gov.uk/communitywildlifetoolkit.htm>.

This will be updated as guidance is provided.

### ***Mapping wildlife habitats***

If you are interested in mapping wildlife habitats in your area then you may want to learn more about the existing standardised system, known as *The Phase 1 Habitat Classification*. Each habitat type/feature is identified by a brief description of its features. It is then allocated a specific name, a code, and unique mapping colour.

Obviously you don't have to follow this system! However if you are interested in finding out more (or using this to help devise a simpler approach for your parish) further information, and a PDF of the Phase 1 Handbook, can be found on the Joint Nature Conservation Committee website at <http://jncc.defra.gov.uk/page-4258>



Jersey Tiger Moth



**IMPORTANT! Please remember:**

- That the majority of wildlife sites (including SSSIs, CWS etc) are privately owned and do not have public access. Please be sensitive to this.
- To avoid disturbance to wildlife. See the Birdwatchers' Code at <http://www.rspb.org.uk/advice/watchingbirds/code/>
- To stick to public rights of way unless you have access permission from a landowner.
- That a licence is required from Natural England for certain activities such as entering a bat roost, handling a dormouse or carrying out a great crested newt survey. If you are unsure please contact Natural England.



## Create a wildlife habitat or improve an existing habitat

Getting the community involved in practical conservation work is a great way of bringing people together and learning more about wildlife.

There are often simple things that can be done to enhance public spaces, such as churchyards and playing fields, for wildlife. Information on Devon's habitats and species and ideas for community action can be found at [http://www.devon.gov.uk/index/environmentplanning/natural\\_environment/biodiversity/communitywildlifetoolkit/cwt-conservationmgmt.htm](http://www.devon.gov.uk/index/environmentplanning/natural_environment/biodiversity/communitywildlifetoolkit/cwt-conservationmgmt.htm)

Examples of existing projects are given in [Section 2](#).

Advice may be available from local wildlife organisations listed in [Section 6](#).

*The Green Light Trust* (based in Suffolk) has produced a handbook designed to help get your community wild space project up and running and offers the advice and materials you need to continue your project year after year. For more information go to <http://www.greenlighttrust.org/community-wild-space-handbook/>



Marsh tit

Lots of nature reserves rely on volunteers

who help with management. Organisations such as BTCV, DWT, RSPB and National Parks run regular volunteer days. A list of the organisations which manage nature reserves in Devon is given in the contacts list in [Section 6](#).

**Remember:** It is best to seek advice about practical work before you start, to ensure that the work you are proposing to do is carried out in the best way and doesn't harm the interests of existing wildlife.

*'Quality habitats may have taken centuries to grow and flourish,  
It can take just one uninformed afternoons work to destroy one.'*



Greater periwinkle



## Improve access to your natural environment

Advice is available from Devon County Council's Public Rights of Way team which is responsible for looking after all public rights of way in Devon. A useful guide, '*Community paths. A 10 step guide to improving public rights of way in your community*' can be found at <http://www.devon.gov.uk/communitypaths.pdf> or from the Public Rights of Way team. The guide covers all aspects of developing a new route including planning, consultation, design, legal matters and maintenance.

The Parish Path Partnership Scheme encourages local communities to work with the Council to ensure that existing rights of way are looked after and improved for everyone to enjoy. Advice and funding is available to support local improvements to these routes. Contact the Public Rights of Way team for more information and advice or go to [www.devon.gov.uk/parish\\_paths\\_partnership\\_scheme.htm](http://www.devon.gov.uk/parish_paths_partnership_scheme.htm)



## Investigate links between the landscape, historic environment and wildlife

There are strong links between current and historic landscapes and our wildlife. These links could provide a fascinating subject for a parish project.

To help understand how the character of Devon's landscape changes from place to place, Devon County Council, Natural England and all local authorities across Devon have jointly prepared **Landscape Character Assessments**. These record what makes landscapes distinctive and special in each area of Devon, highlighting what people particularly like about their landscape. Landscape Character Assessments are important because they include guidelines and objectives to manage future changes and pressures on our landscapes, including those that affect biodiversity and the historic environment. They form part of the evidence base for local plans and can be referred to by planners, policy-makers and land managers. They also have educational value, by helping us to understand the natural and human forces that have shaped the landscapes we see today, as well as understanding how they might change in the future. To find out more, including specific guidance on how to use



Beech Tree,  
Teign Valley

Landscape Character Assessments at a local level, go to [http://www.devon.gov.uk/index/environmentplanning/natural\\_environment/landscape.htm](http://www.devon.gov.uk/index/environmentplanning/natural_environment/landscape.htm)

Find out how wildlife habitats have changed by looking at old maps or photos. Devon's historical records are held by the Devon Record Office located in Sowton. See the contacts list or go to [http://www.devon.gov.uk/record\\_office.htm](http://www.devon.gov.uk/record_office.htm)

In order to record and understand the wider historic landscape of the county, Devon County Council and English Heritage have undertaken a **Historic Landscape Characterisation** project for the county. To find out more go to [www.devon.gov.uk/landscape-characterisation.htm](http://www.devon.gov.uk/landscape-characterisation.htm) or contact Devon County Council's Historic Environment Service.

Information on historic records can also be found at [www.heritagegateway.org.uk/gateway/](http://www.heritagegateway.org.uk/gateway/)

An interesting way to make links between the history of a parish and wildlife could be through an oral history project. Advice is provided by the Oral History Society, see contacts list or go to <http://www.oralhistory.org.uk/>



## Improve understanding of your natural environment - interpretation

Interpretation (such as leaflets, panels and guided walks) helps people to learn about and enjoy their natural environment. Involving the community (especially children) in creating interpretation materials can be great fun and also creates ownership. Local wildlife organisations listed in Section 1 may be able to help with advice or through leading a guided walk / event.

Examples of existing projects are given in [Section 2](#).






## Encourage people to get out there!

We know that contact with the natural environment and involvement in wildlife projects provides benefits such as improved health, greater community cohesion and new skills. There are many ways in which you can encourage greater involvement e.g. organise picnics, wildlife walks or bike rides, community gardening, habitat management days, surveys, arts projects, community orchard projects etc.

Examples of projects are given in [Section 2](#).





Section 2  
**Examples of  
Projects**

## Section 2: Examples of Projects



The list below includes a wide range of projects. Some are led by community groups whilst others are led by wildlife organisations and involve communities.

Please email [nature@devon.gov.uk](mailto:nature@devon.gov.uk) to add details of your own project to this list. Contact details are given in [Section 6](#)



### Surveys

#### **Swifts - 2010 onwards**

Swifts arrive from Africa in late April, staying for just three months to breed.

They generally nest under gables and eaves. Numbers have fallen by 45% in the South West since 1995 largely due to loss of nesting sites through renovations. The RSPB is trying to find out more about where swifts nest in the county by encouraging people to send in existing and historic swift records (cards are provided). They are also encouraging people to put up swift nest boxes.

**Contact: RSPB, DWT (Exeter Wild City),  
Blackdown Hills AONB or East Devon AONB**

<http://www.devonwildlifetrust.org/swifts/>

<http://www.blackdownhillsaonb.org.uk/Swift-survey.html>

<http://www.rspb.org.uk/thingstodo/surveys/swifts/index.aspx>

[www.eastdevonaonb.org.uk](http://www.eastdevonaonb.org.uk)



### **The Great Easter Newt Hunt - 2011**

Devon Amphibian and Reptile Group volunteers have been busy undertaking surveys and encouraging others to survey their garden ponds for newts. This has been part of a national project, see <http://www.arguk.org/the-great-easter-newt-hunt-2011> which will use information to help conserve newts and create a garden newt map.

**Contact: Devon Amphibian and Reptile Group**

### **RSPB Volunteer & Farmer Alliance Project - on-going**

If you are able to identify the majority of British species by sight and by sound, and can walk for 3 - 4 hours over varied terrain, you should consider helping the RSPB in their 'Volunteer and Farmer Alliance' project. Three surveys are conducted on the farm between April and June and all bird species are recorded. At the end of the survey all results are sent to the RSPB who produce a farm report containing advice as to how the landowners could manage their farm for the species found.

**Contact: RSPB SW office in Exeter or see**  
<http://www.rspb.org.uk/ourwork/farming/vandfa/>

### **Open Air Laboratories initiative - runs until end of 2012**

OPAL aims to help people explore, study, enjoy and protect their local environment. The initiative includes six national public involvement surveys on biodiversity, bugs, climate, air, soils and water. The website includes useful identification guides as well as an iSpot community (helps you to identify wildlife). To find out more go to: <http://www.opalexplorenature.org/>



Heron





## Habitat creation / management

### **Holyford Woods Local Nature Reserve, East Devon**

**Organisations involved:** Holyford Woodland Trust, East Devon District Council.

Holyford Woods is a beautiful wood, in the Axe Valley, near Seaton. A local group, now the Holyford Woodland Trust, raised funds to buy the woods so that the woods and its wildlife could be protected and made available for people to enjoy. The site is now a Local Nature Reserve and managed by East Devon District Council

**Contact:** East Devon District Council Countryside Team

### **Brent Island, South Brent**

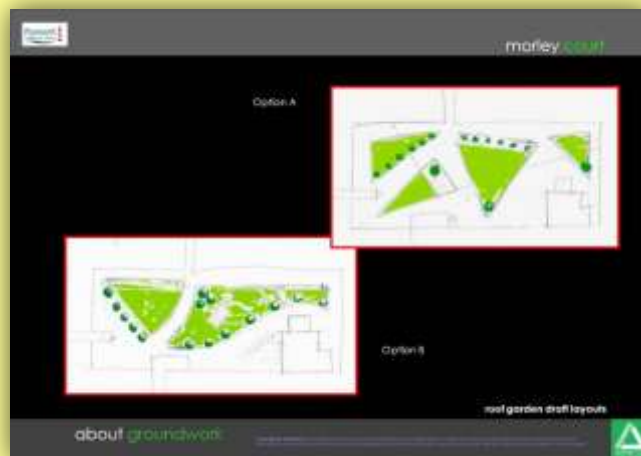
'The Island' is the local name for the land where the River Avon divides along both sides of an ancient water meadow in South Brent. Brent Island was bought for the village by its residents in 1994 and the Brent Island Trust charity was established to look after it. The Trust has restored the weir and linhay (traditional hay barn). Volunteers undertake all aspects of management from fundraising to getting their hands dirty carrying out practical conservation work.

**Contact:** Brent Island Trust - <http://www.southbrent.co.uk/index.php?id=96>

### **Morley's Roof Top Garden, Plymouth**

**Organisation's involved:** Morley Court Resident's committee, Groundwork South West, Plymouth Community Homes.

The residents at Morley Court are planning (2011) a re-design of their roof top garden area, located in the Centre of Plymouth. With support from Groundwork South West the residents have developed their ideas for the new garden and have improved communications with their neighbours through events and drop-in sessions. It is hoped that the garden designs will be put into action later this year after with funds secured funds from Plymouth Community Homes, Money Tree fund.



**Contact:** Groundwork South West

## **The Bridford Trust, Dartmoor - Rowden Valley Wood and the Woodland Park**

The Bridford Trust is a charity whose main aim is to encourage the development of appropriate recreational, environmental and conservation projects within the Parish of Bridford for the benefit of all.

In 2008 Rowdon Valley Wood was a two acre piece of unmanaged woodland on the edge of the village and hardly anyone knew of its existence. Now there is a magical circular walk through the wet woodland alive with birds and featuring boardwalks and bridges, ponds and a small waterfall, boggy areas full of interesting plants and a viewing platform which is accessible by wheelchair. The wood was bought by The Bridford Trust, assisted by grants from Dartmoor National Park Sustainability Fund and Rural Aid, and all the work was carried out by volunteers from the village. Working parties carted soil, laid gravel, built boardwalks, fences and bridges and in the process kept fit.

The Woodland Park is an area of grassland that has been planted to form woodland, hedges, a wildflower meadow, a bird corner and an arena for outdoor performances

For more information see -

<http://bridford.2day.ws/bridford/section/TheBridfordTrust/>

## **Plymouth Tree Partnership**

Organisations involved: Plymouth Tree Partnership

Volunteer Tree Wardens from the Plymouth Tree Partnership work with local communities to improve Plymouth's urban areas through a range of activities including; arranging new tree planting schemes, looking after young trees, giving information and advice, and carrying out surveys. The Wardens are co-ordinated by The Tree Council nationally and supported locally by the Partnership.

Plymouth Tree Partnership volunteers offer assistance with tree and hedge planting in school grounds as part of their 'School Trees' project which has been running since 2009.

Contact: Plymouth Tree Partnership - <http://www.plymouthtrees.org/> or contact BTCV in Plymouth on 01752 301445

## **Meddon Local Nature Reserve, Hartland, Nr Bideford**

**Organisations involved: Hartland Parish Council, North Devon AONB and Biosphere Service**



Meddon Green LNR is Devon's only culm grassland Local Nature Reserve. Although the site is small there is a good variety of habitats and species present. The site has had grazing re-introduced to help retain the flower-rich open grassland areas. A local group of volunteer run the site and organise public events to help people understand more about the great variety of wildlife on the reserve.

**Contact: North Devon AONB and Biosphere Service**

## **Ford Wood Local Nature Reserve, Bideford**

**Organisations involved: Bideford Town Council, North Devon AONB and Biosphere Service**

This ancient semi-natural woodland is owned by Bideford Town Council. There are regular volunteer practical projects including a variety of work from putting up bird boxes to clearing laurel. The Ford Wood Management Group are always pleased to have help from local volunteers.

**Contact: North Devon AONB and Biosphere Service**

## Japanese knotweed control, Lee, North Devon

Japanese knotweed is Britain's most invasive non-native plant. It thrives on disturbance and the tiniest piece can re-grow making it difficult to remove. Community projects involving local landowners and volunteers can therefore make a big difference. The project for Lee and Lincombe originated with a public meeting identifying the spread of knotweed as a significant problem. A steering committee was established and the Environment Agency consulted. As knotweed treatment by professional contractors can be very costly the committee decided that they would organise a treatment programme themselves. A training programme was established to promote skills within the local community which resulted in six people gaining the necessary qualifications to undertake chemical treatment work. Gaining the trust of local landowners was also vital as it allowed for widespread take-up of the programme.

Free knotweed treatment was offered but many made a donation to augment funding from North Devon District Council and North Devon AONB.

Funding paid for training, equipment and the chemical needed to undertake the work.

The project in Lee has treated 23 sites in the area and involved 18 different landowners.



For more information on Japanese Knotweed go to:  
[www.devon.gov.uk//japanese\\_knotweed.htm](http://www.devon.gov.uk//japanese_knotweed.htm)



## Events

### **Woodland Magic at Radford Woods, Plymstock, Devon**

**Organisations involved: Groundwork South West, Friends of Radford Wood, Plymouth City Council, Plymstock School**

A 'Woodland Magic' event was held to encourage local people to use and help manage their Local Nature Reserve (owned by Plymouth City Council) and to join the 'Friends of' group. Around 150 people took part in the day which included a treasure hunt, storytelling, refreshment and a fancy dress competition.

Groundwork South West worked with A level Art students at Plymstock School to create a wildlife interpretation trail with a difference. The trail was designed to meet the needs of young families and those attending the Beckly Centre (which provides support for young people with special needs). Pieces of art focusing on different habitats (woodland and wetlands) were produced as well as a series of illustrations around a fairy theme, complete with fairies in wellies and outdoor coats!



**Contact for further information: Groundwork South West**



## Landscape / Historic environment

### **Calstock Parish Heritage Project, Tamar Valley**

**Organisations involved: Tamar Valley AONB, Calstock Parish Council**

The Tamar Valley AONB Project and Calstock Parish Council have been working to deliver a project to help the local community understand and engage with their landscape heritage. The project involves free training days in artefact identification and practical skills, geophysical surveys, an archaeological excavation and development of an interactive heritage map. The map will show where archaeology is located as well and provide the opportunity for people to add their own local historic knowledge and photos. The project is jointly funded by the Heritage Lottery Fund (HLF), the Tamar Valley AONB and Calstock Parish Council.

**Contact for further information: Tamar Valley AONB**

### **East Devon AONB Parishscapes Project - 2007 - 2010**

#### ***'Bringing the past to life'***

The three year pilot Parishscapes project was based in Branscombe and Beer and aimed to raise community awareness and understanding of historic landscapes. The project included digitisation of parish tithe maps, collation of oral history accounts of landscape change and events, walks and talks.

Contact for further information: East Devon AONB or for a copy of the Project Report see <http://www.eastdevonaonb.org.uk/index.php?page=parishscapes>



## Access projects

### **Woodland Woods footpath improvements, Plymouth**

**Organisations involved: Plymouth City Council, Stepping Stones to Nature Project, Groundwork South West**

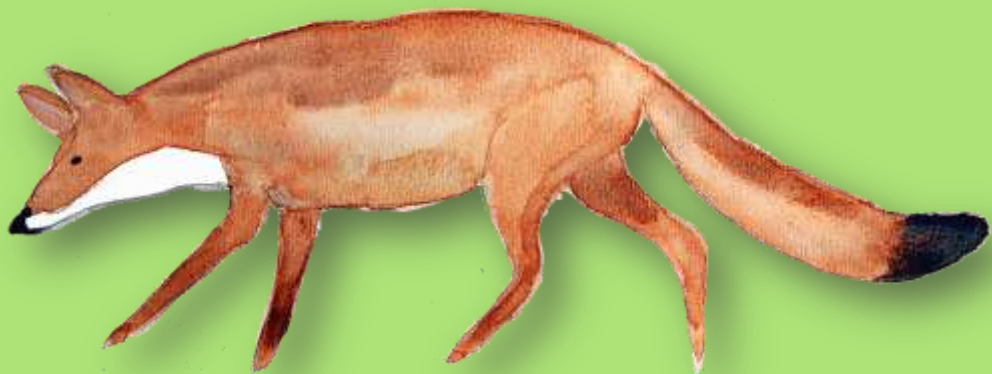
Funded through the English Woodland Grant Scheme and Big Lottery's Access to Nature Programme, Groundwork South West's Conservation Volunteering team have upgraded over 1500 metres of footpath through one of Plymouth's Local Nature Reserves.

**Contact: Groundwork South West.**



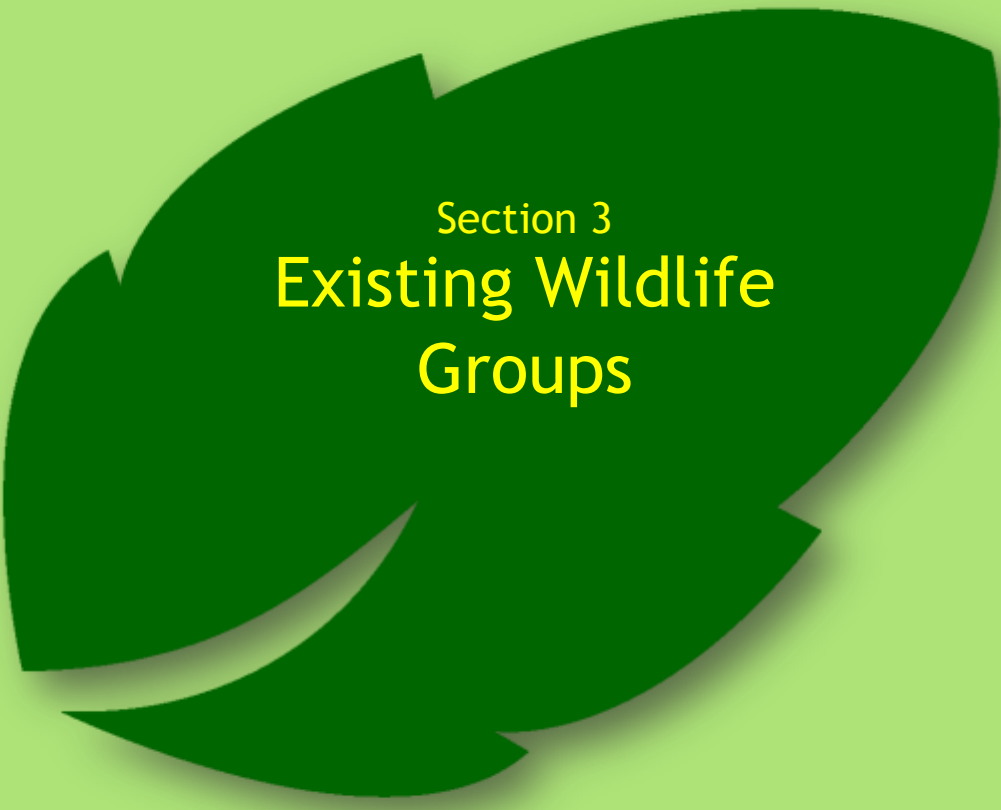
## Parish Plans

**Axmouth Parish Council** has consulted with the local community to produce a Parish Plan that has identified a number of biodiversity related projects that they want to proceed with; a good example of what can be done by village residents;  
<http://www.axmouthparishcouncil.co.uk/index.php?page=report-2011>



Fox





Section 3  
**Existing Wildlife  
Groups**

## Section 3: Existing wildlife groups




A useful starting point is to find out whether there are any wildlife groups or organisations already running projects or managing nature reserves in your area, or which could provide advice or information.

Both Devon Wildlife Trust and the RSPB have local groups across Devon which are run by volunteers, and always looking for new members. They get involved in a wide range of activities such as organising events and talks, fund raising and practical conservation work. RSPB groups include, Exeter & District, Plymouth and Torbay and South Devon. For contact details go to, <http://www.rspb.org.uk/localgroups/find.aspx>. Devon Wildlife Trust groups include Barnstaple and District, Bovey Tracey, East Devon, Exeter, Exmouth and Bystock, Halsdon and Dolton, South Brent and Ivybridge, Tavistock. For more information see <http://www.devonwildlifetrust.org/local-groups/>.

Specific interest groups (such as Devon Bat Group, Devon Mammals Group, Devon Bird Watching and Preservation Society, Devon Butterfly Group and the Devon Reptile and Amphibian Group) also run events, surveys and conservation projects. These groups are open for anyone to join and are run by enthusiastic volunteers. Existing members may be happy to provide advice or help with surveys. For a full list of groups and contact details see the contacts table in Section 6.

There are a huge number of organisations which employ staff to work on wildlife issues. A list of organisations and contact details is provided in the contacts table ([Section 6](#)). The organisations listed below work with volunteers and community groups and may be able to offer opportunities, or provide advice. The level of help that these organisations are able to offer will vary and will often depend on work priorities and resources at that time. Please do not be put off if they are unable to help.

- Devon Wildlife Trust
- RSPB
- Dartmoor and Exmoor National Parks
- Areas of Outstanding Natural Beauty (there are five AONB teams in Devon)
- Local Authority Countryside Teams (including North Devon Biosphere Service)
- Groundwork South West
- British Trust for Conservation Volunteers
- Woodland Trust



Section 4  
**Wildlife Priorities  
in Devon**

## Section 4: Wildlife Priorities in Devon



### Priority species and habitats - Biodiversity Action Plans

The UK Biodiversity Action Plan (BAP) was first published in 1994 and has been updated regularly since. The plan includes a list of priority species and habitats which have been identified as being the most threatened in the UK and therefore require conservation action. The list (in 2007) includes 1150 species and 65 habitats. Action plans have been produced for some of these species and habitats. For more information go to <http://jncc.defra.gov.uk/page-5705>.

Local BAPs have also been developed in order to help take forward conservation priorities identified in the UK BAP. In 1998 the Devon Biodiversity Partnership published *The Nature of Devon - A Biodiversity Action Plan*. This set out priorities and targets for wildlife conservation in Devon, identifying 29 key wildlife habitats and 251 key species (found in Table 1 of Section E of the Devon BAP, see [http://www.devon.gov.uk/dbap-section\\_e.pdf](http://www.devon.gov.uk/dbap-section_e.pdf)). Action plans were produced for 17 habitats and 20 species which were considered to require a county wide approach to their conservation. Wildlife with a more localised distribution is addressed at a more local scale e.g. upland heathland conservation through Dartmoor BAP and the small blue butterfly through Torbay BAP.

BAP	Led by	Website
Devon wide	Devon County Council	<a href="http://www.devon.gov.uk/devon_biodiversity_action_plan">http://www.devon.gov.uk/devon_biodiversity_action_plan</a>
Dartmoor	Dartmoor National Park Authority	<a href="http://www.dartmoor-npa.gov.uk/lookingafter/laf-naturalenv/laf-action-for-wildlife-partnership/au-baptoc">http://www.dartmoor-npa.gov.uk/lookingafter/laf-naturalenv/laf-action-for-wildlife-partnership/au-baptoc</a>
East Devon	East Devon District Council	<a href="http://www.eastdevon.gov.uk">www.eastdevon.gov.uk</a>
Exmoor	Exmoor National Park Authority	<a href="http://www.exmoor-nationalpark.gov.uk/environment/wildlife-and-ponies/exmoors-biodiversity">http://www.exmoor-nationalpark.gov.uk/environment/wildlife-and-ponies/exmoors-biodiversity</a>
Torbay	Torbay Coast and Countryside Trust	<a href="http://www.countryside-trust.org.uk/lbap.htm">http://www.countryside-trust.org.uk/lbap.htm</a>
Teignbridge	Teignbridge District Council	<a href="http://www.teignbridge.gov.uk">www.teignbridge.gov.uk</a>

North Devon  
Biosphere  
Reserve

North Devon's  
AONB and  
Biosphere  
Service

<http://www.northdevonbiosphere.org.uk/wildlife/>



## Designated sites

Wildlife habitats can receive different levels of protection through designations at European, national and local level (statutory and non statutory).

Designated Site	Description
<b>Statutory</b>	
<u>Special Areas of Conservation (SAC)</u>	Protection under the European Union's Habitats Directive to a variety of wild animals, plants and habitats.
<u>Special Protection Areas (SPA)</u>	Protection under the Birds Directive to rare and vulnerable birds, and for regularly occurring migratory species.
<u>Ramsar Sites</u>	Wetlands of international importance designated under the Ramsar Convention
<u>Sites of Special Scientific Interest (SSSI)</u>	Examples of the country's best wildlife and geological sites.
National Nature Reserves (NNR)	A selection of the best parts of SSSIs. Initially established to protect sensitive features and to provide 'outdoor laboratories' most NNRs are now also accessible to the public.
<u>Marine Conservation Zones (MCZs)</u>	Protect nationally important habitats, species and geology. There is currently only one MCZ around Lundy Island although the Marine and Coastal Access Act has created a duty on the government to designate new MCZs.
Marine Protected Areas (MPAs)	The MPA network is formed from five designations (SACs, SPAs, Ramsar, SSSI and MCZs).
<u>Local Nature Reserves (LNR)</u>	All local authorities have powers to acquire, declare and manage LNRs. To qualify for LNR status, a site must be of importance for wildlife, geology, education or public enjoyment
<b>Non statutory</b>	
<u>County Wildlife Sites (CWS)</u>	<u>Sites of county significance for wildlife or geology.</u>
<u>County Geological Site (CGS also known as RIGS)</u>	<u>Positive management of CWSs and CGSs is encouraged and development affecting them is controlled by Local Plan policies. Information on CWS is collated by Devon Biodiversity Records Centre and funded largely by Devon County Council and Devon Wildlife Trust.</u>
<u>Special Verges</u>	<u>Botanically rich road verges are designated as Special Verges by Devon County Council.</u>



## Protected species

Species are protected through both national and European legislation. Legislation is complex and the information given below is a summary only and is not comprehensive.

Species found in / off Devon which are fully protected through European legislation (Annex IV species) include:  
All species of bat, otters, dormice, great crested newts, dolphins, harbour porpoise, leatherback turtle, shore dock, early gentian, fen orchid.

Species found in Devon which are protected to varying degrees through national legislation include (as well those listed above). Note this list is not comprehensive.

Birds - All birds their nests and eggs are protected by law. It is therefore an offence to kill, injure or take any wild bird species and take, damage or destroy its nest or eggs. Some species have additional protection, making it an offence to intentionally or recklessly disturb them at the nest. In Devon these include kingfisher, barn owl, peregrine, dartford warbler, cetti's warbler, curl bunting, goshawk and woodlark.

Reptiles & Amphibians - It is illegal to kill or injure an adder, smooth snake, grass snake, common lizard or slow worm.

Mammals - Water voles

River Species - White Clawed Crayfish, Allis Shad, Twait Shad and Freshwater Pearl Mussel

Invertebrates Butterflies such as Brown Hairstreak, Heath Fritillary, Marsh Fritillary, Silver Studded Blue Butterfly, Pearl Bordered Fritillary, Small Blue and Wood White as well as the Southern Damselfly and Fairy Shrimp.

Plants Bluebell (offence relates to sale only), Deptford pink, Lundy cabbage, pennyroyal, Plymouth pear, sand crocus, small hare's ear, water germander.

Further information on wildlife legislation can be found at <http://www.naturenet.net/law/>. Detailed information can be found on the JNCC (Joint Nature Conservation Committee) website at <http://jncc.defra.gov.uk/>



Juvenile Goshawk



Section 5  
**Practicalities**



## Section 5: Practicalities



### Getting others involved

In order to find like-minded people in your area (or those with specific skills such as fund raising!) you could write to the parish magazine, put up posters in public places or contact groups such as the WI, local school or Parish Council.

Information on how to set up a project group, can be obtained from the Community Council of Devon at <http://www.devonrcc.org.uk>

You will need to consider whether there are any individuals or organisations who are key players in making your project happen. It is important to talk to any relevant owners or land managers as soon as possible and certainly before they find out about your proposals from local gossip!

You can generate interest by holding an event or public meeting at which you will:

- Excite and enthuse people about your project.
- Present your ideas.
- Get people to sign up to help and be involved.

Try to hold your event when the maximum number of people will find it convenient to attend, give it plenty of publicity and remember that refreshments help make it a sociable occasion.



### Insurance

The need for insurance obviously depends on the type of project. If you are going to use volunteers to carry out habitat management it may be worth considering membership of British Trust for Conservation Volunteer's (BTCV) Community Network which offers a number of benefits including access to Public Liability and Personal Accident Insurance. See <http://www2.btcv.org.uk/display/groupinsurance>. or contact BTCV for more information.

Linking to groups such as Women's Institute, Parish Councils and Scout groups may allow you to be covered by their public liability insurance at no extra cost.



## Health and Safety

Health and Safety is obviously an important issue which must be considered from the outset. Useful information regarding Health & Safety and risk assessments can be found on the Health and Safety Executive website [www.hse.gov.uk](http://www.hse.gov.uk)

<http://www.lancashire.gov.uk/corporate/web/?siteid=5136&pageid=26817&e=e> gives advice and a step by step guide on how to begin your Health & Safety Assessment.



## Funding your project

Whatever the size of your project you are likely to need funding for things such as tools, training, contractors, publicity material, hiring a hall or even land purchase. The two main avenues to explore (often both will be needed) are (i) community fundraising and (ii) applying for a grant.

### Community Fundraising

Many community projects involve fundraising activities before they can start. Within the community there will be people who have undertaken fundraising for a charity or school in the past and can make some suggestions for fundraising events. Often, grant applications will not fully fund a project anyway so you may have to do some fundraising as well. Activities might include sponsored events, fete, bring and buy sale, car boot sale, quiz night, auction (prizes donated from local businesses?), barn dance and barbeque.



Stag Beetle

The possibilities are endless! Make the most of internet and do a search on Google for 'fundraising ideas'. Some events may require a licence, so check with the local authority before your plans get carried away.

### Applying for a grant

Grant forms can be simple or complex, but any application will be eased if you first consider a few basic points. For instance, have you:

- Identified, and can you show clearly, that there is a need for your project?
- Gathered information/research material to prove the need?
- Considered whether you should have partners to help share the work load? This can add more credibility to the application, but you would need to ensure you have a clear plan of who is doing what with how much money etc.

- Decided who within the group or organisation can drive the project forward. Do they have enough free time to spend doing so? Do they have the right skills?

### Setting priorities

It is important to decide priorities. Make a list of all the tasks involved in making your application, and prioritise them. Each task should be allocated to a person and have a deadline. Combine the tasks into a logical "action plan".

### Ready to go

Before beginning to prepare a funding application, check your plan once more to ensure it covers such issues as:

- Sustainability (can your project support itself financially after the initial funding period?).
- Coherence (is your project easy to understand and explained logically?).
- Who is going to deal with any follow-up questions or calls?

### Application structure

An application should have clear structure. When applying for grants you will usually be asked to complete a set application form. For unsolicited applications, a suggested outline is:

- Project title.
- Introduction - who you are.
- Proposal summary.
- The problem or need and who will benefit from the project.
- What you want to achieve.
- How you will do it.
- How you will monitor your results.
- How much money you will need.
- How much money will you raise from your own and/or other funding sources.



Common Bee Fly

### Next steps

The next step is to draw up a list of potential funders. For this, you will need to do some research. For example:

- Choose funders whose criteria the project fits.
- Make contact before you prepare your application to ensure your project fits the funding criteria.
- Find out the timetables or timescales for reply.
- State clearly where you hope to find all the funding.

## Practical tips

- If you can, always type up the application form.
- Ensure you answer all the relevant questions
- Make sure you enclose all of the documentation that is requested, in the format requested. These days you are often asked for electronic/scanned copies of information.
- Choose your referees carefully, and ensure that they will be around in the evaluation period.
- Make sure your referees have a copy of the proposal.
- If the Trust or funder has a website, check it out before making the application.
- Letters of support from relevant prominent people may be useful. This could include the beneficiaries of your project.
- Always get your application proof read by someone who is not involved. If they can understand it, then the funder should too.
- Always try and raise some money locally as a "community contribution to the project".
- Approach local companies - they are often willing to help out with goods, services or funding.
- Don't give up. If in doubt, ask the funder(s) for help



Hornet

## Useful sources of funding information

When researching the information below, please do note that funders and funding are changing all the time. Check that funding is still available, that your project meets relevant funding criteria and that you have the latest application information.

### General funding Web Sites

There are a number of web sites which offer information and advice on funding and grants. Some are provided free of charge, others make a charge for their service. A couple that may be useful to you include:

Funding Central

<http://www.fundingcentral.org.uk>

The Directory of Social Change

<http://www.dsc.org.uk/FundingWebsites>

Heritage Link (a funding directory supported by the Heritage Lottery Fund)

[Heritage Link](#)

Specific sources of funding (apologies if these become out of date) - note that this list is not comprehensive.

Other than the links below it is worth contacting your local parish council and local councillor who may be able to help with small grants.

**Tree Council** - small grants for schools and communities for tree planting schemes. From April 2011, £4.2m will be available for The Big Tree Plant campaign, to support community groups to plant trees in towns, cities and residential areas throughout England.

**The Big Lottery** <http://www.biglotteryfund.org.uk/index>  
There are several national lottery funds which could be applicable. One particular fund which should be considered is Awards for All.

**Awards for All England - Grants**: £300 - £10,000. 'Awards for All gives money to projects that encourage people to take part in arts, sport, heritage and also community projects'. It is a simple small grants scheme. The application form is short and simple and you will find out if you are successful within six weeks.

**Heritage Lottery Fund** will sometimes fund environmental projects if they have a strong heritage element to them. It would be best to talk to them first to see if your project fits their criteria.

<http://www.hlf.org.uk>

**AONB Sustainable Development Funds** (contact the AONBs for more information)  
Blackdown Hills  
East Devon  
North Devon  
South Devon  
Tamar Valley

**SITA Trust** - Enriching Nature: for biodiversity conservation projects within ten miles of any landfill site in England.

**Biffawards** - grants for biodiversity projects within 10 miles of a Biffa operation (landfill)

**GrantScope** - significant sums of money often available for biodiversity action, including landscape-scale projects.

**The Tubney Charitable Trust** - large funds available but on an invitation-to-bid only basis.

**Esmee Fairbairn Foundation** - no maximum size of grant. "Priority will be given to high quality projects that are exemplars of good practice or imaginative



Bluebell

approaches to old problems, that have wider impact, leading to changes in the law, policy or practice or that may be viewed as difficult to support or too 'high risk' by other funders.”

The Ernest Cook Trust - <http://www.ernestcooktrust.org.uk/grants/index.html>

The Prince's Countryside Fund - <http://princescountrysidefund.org.uk/>

The Forestry Commission has various grants for woodland planting and management. See <http://www.forestry.gov.uk/>

[Environmental Stewardship](#) - whole farm agri-environment scheme funding.



Section 6  
**Contact Details**

## Section 6: Contact Details



Whilst we will endeavour to update this table links and details may become out of date - apologies.

Devon wildlife groups (run by volunteers) are highlighted in bold italics - contact details are not given as these will change. Please refer to their websites for contact details or contact Devon Biodiversity Records Centre who may be able to help.

\* = organisations which manage nature reserves

Category	Organisation	Telephone	Web address	E-mail Address
Access	Devon County Council - Public Rights of Way	0845 1551004	<a href="http://www.devon.gov.uk/prow">www.devon.gov.uk/prow</a>	<a href="mailto:prow@devon.gov.uk">prow@devon.gov.uk</a>
Amphibians and Reptiles	Amphibian and Reptile Conservation	01201 391319	<a href="http://www.arc-trust.org">www.arc-trust.org</a>	<a href="mailto:enquiries@arc-trust.org">enquiries@arc-trust.org</a>
	<i>Devon Reptile and Amphibian Group (DRAG)</i>		<a href="http://groups.arguk.org/DRAG">http://groups.arguk.org/DRAG</a>	<a href="mailto:devonrag@hotmail.com">devonrag@hotmail.com</a>
	Froglife	01733 558844	<a href="http://www.froglife.org">www.froglife.org</a>	<a href="mailto:info@froglife.org">info@froglife.org</a>
Areas of Outstanding Natural Beauty (AONB) /	Blackdown Hills AONB	01823 680681	<a href="http://www.blackdownhillsaonb.org.uk">www.blackdownhillsaonb.org.uk</a>	<a href="mailto:blackdownhills@devon.gov.uk">blackdownhills@devon.gov.uk</a>
	East Devon AONB	01404 46663	<a href="http://www.eastdevonaonb.org.uk">www.eastdevonaonb.org.uk</a>	<a href="mailto:eastdevonaonb@btconnect.com">eastdevonaonb@btconnect.com</a>



<b>Biosphere Reserves</b>	North Devon AONB and Biosphere Service	01237 423655	<a href="http://www.northdevonaonb.org.uk">www.northdevonaonb.org.uk</a> <a href="http://www.northdevonbiosphere.org.uk/welcome-to-a-very-special-place/">http://www.northdevonbiosphere.org.uk/welcome-to-a-very-special-place/</a>	<a href="mailto:aonb@devon.gov.uk">aonb@devon.gov.uk</a> biosphere-mailbox@devon.gov.uk
	South Devon AONB	01803 861384	<a href="http://www.southdevonaonb.org.uk">www.southdevonaonb.org.uk</a>	<a href="mailto:enquiries@southdevonaonb.org.uk">enquiries@southdevonaonb.org.uk</a>
	Tamar Valley AONB	01822 835030	<a href="http://www.tamarvalley.org.uk">www.tamarvalley.org.uk</a>	<a href="mailto:enquiries@tamarvalley.org.uk">enquiries@tamarvalley.org.uk</a>
<b>Birds</b>	The British Trust for Ornithology (BTO)	01842 750050	<a href="http://www.bto.org">www.bto.org</a>	<a href="mailto:info@bto.org">info@bto.org</a>
	<i>Devon Birds</i>	-	<a href="http://www.devonbirds.org">www.devonbirds.org</a>	<a href="mailto:info@devonbirds.org">info@devonbirds.org</a>
	* RSPB ( <i>has local groups</i> )	01392 432 691	<a href="http://www.rspb.org.uk">www.rspb.org.uk</a> local group information - <a href="http://www.rspb.org.uk/localgroups/find.aspx">http://www.rspb.org.uk/localgroups/find.aspx</a>	Online Enquiry form
	Swift Conservation	01392 432691	<a href="http://www.swift-conservation.org">www.swift-conservation.org</a>	
	The Barn Owl Trust (based in Ashburton)	1364 653026	<a href="http://www.barnowltrust.org.uk">http://www.barnowltrust.org.uk</a>	<a href="mailto:info@barnowltrust.org.uk">info@barnowltrust.org.uk</a>
<b>Churchyards</b>	Caring for God's Acre - aims to inspire and support local communities to care for churchyards and burial grounds in a way which benefits both people and wildlife.	01568 611154	<a href="http://www.caringforgodsacre.org.uk">www.caringforgodsacre.org.uk</a>	<a href="mailto:info@cfga.fsnet.co.uk">info@cfga.fsnet.co.uk</a>
	Living Churchyards (Yorkshire Wildlife Trust Project)		<a href="http://www.ywt.org.uk/living_churchyards.php">www.ywt.org.uk/living_churchyards.php</a>	

<b>Community</b>	Community Council of Devon	01392 383443	<a href="http://www.devonrcc.org.uk">www.devonrcc.org.uk</a>	info@devonrcc.org.uk
<b>Countryside and Conservation Organisations</b>	British Trust for Conservation Volunteers (BTCV)	01302 388 883	<a href="http://www.btcv.org">www.btcv.org</a>	information@btcv.org.uk
	Campaign to Protect Rural England: Devon		<a href="http://www.cpredevon.org.uk">http://www.cpredevon.org.uk</a>	Enquiry form on website
	DEFRA - Department for Environment, Food & Rural Affairs	08459 335577	<a href="http://www.defra.gov.uk">www.defra.gov.uk</a>	defra.helpline@defra.gsi.gov.uk
	* Devon Wildlife Trust ( <i>has local groups</i> )	01392 279244	<a href="http://www.devonwildlifetrust.org">www.devonwildlifetrust.org</a>	contactus@devonwildlifetrust.org
	Devon Farming and Wildlife Advisory Group (FWAG)	01392 364392	<a href="http://www.fwag.org.uk/devon">http://www.fwag.org.uk/devon</a>	devon@fwag.org.uk
	Environment Agency	03708 506506	<a href="http://www.environment-agency.gov.uk">www.environment-agency.gov.uk</a>	enquiries@environment-agency.gov.uk
	Green Light Trust (Suffolk)	01284 830829	<a href="http://www.greenlighttrust.org">www.greenlighttrust.org</a>	info@greenlighttrust.org
	Groundwork South West	01752 217721	<a href="http://www.groundworksouthwest.org.uk">www.groundworksouthwest.org.uk</a>	southwest@groundwork.org.uk
	* National Trust	0844 8001895	<a href="http://www.nationaltrust.org.uk">www.nationaltrust.org.uk</a>	enquiries@nationaltrust.org.uk
	* Natural England	0300 060 1110	<a href="http://www.naturalengland.org.uk">www.naturalengland.org.uk</a>	devon@naturalengland.org.uk
	People's Trust for Endangered Species		<a href="http://www.ptes.org">http://www.ptes.org</a>	
	* South West Lakes Trust	01566 771930	<a href="http://www.swlakestrust.org.uk/home">www.swlakestrust.org.uk/home</a>	info@swlakestrust.org.uk
	* Torbay Coast and Countryside Trust	01803 606035	<a href="http://www.countryside-trust.org.uk">www.countryside-trust.org.uk</a>	info@countryside-trust.org.uk
	<b>Environmental Education</b>	Field Studies Council	0845 3454071	<a href="http://www.field-studies-council.org">www.field-studies-council.org</a>

	OPAL	-	<a href="http://www.opalexplornature.org">www.opalexplornature.org</a>	Online Enquiry form
	See also local authorities, conservation and countryside organisations .			
<b>Funding</b>	The Directory of Social Change	08450 77 77 07	<a href="http://www.dsc.org.uk">www.dsc.org.uk</a>	Online Enquiry form
	Funding Central	-	<a href="http://www.fundingcentral.org.uk">www.fundingcentral.org.uk</a>	fundingcentral@ncvo-vol.org.uk
	The Landfill Communities Fund	01926 488 300	<a href="http://www.entrust.org.uk">www.entrust.org.uk</a>	Online Enquiry Form
	National Lottery funding	0845 275 0000	<a href="http://www.lotteryfunding.org.uk">www.lotteryfunding.org.uk</a>	Online Enquiry Form
	Devon Community Foundation (supports community causes across Devon)	01884 235887	<a href="http://www.devoncf.com">http://www.devoncf.com</a>	info@devoncf.com
<b>Fungus</b>	The Association of British Fungus Groups	01460 221788	<a href="http://www.abfg.org">www.abfg.org</a>	enquiries@abfg.org
<b>Geology</b>	<i>Devon RIGS Group (regionally important geological sites)</i>	-	<a href="http://www.ukrigs.org.uk">www.ukrigs.org.uk</a> <a href="http://www.devonrigs.org.uk">www.devonrigs.org.uk</a>	info@devonrigs.org.uk
<b>Hedgerows</b>	<i>Devon Hedge Group</i>	01392 382257	<a href="http://www.devon.gov.uk/devon_hedges.htm">www.devon.gov.uk/devon_hedges.htm</a>	hedges@devon.gov.uk
<b>Historic Environment / records</b>	Devon Records Office	01392 384253	<a href="http://www.devon.gov.uk/index/councildemocracy/record_of_fice.htm">www.devon.gov.uk/index/councildemocracy/record_of_fice.htm</a>	devrec@devon.gov.uk
	Devon County Council's Historic Environment Service	01392 382246	<a href="http://www.devon.gov.uk/index/environmentplanning/historic_environment.htm">www.devon.gov.uk/index/environmentplanning/historic_environment.htm</a>	archaeol@devon.gov.uk
	Oral History Society		<a href="http://www.oralhistory.org.uk">http://www.oralhistory.org.uk</a>	
	English Heritage	0870 3331181	<a href="http://www.english-heritage.org.uk">www.english-heritage.org.uk</a>	customers@english-heritage.org.uk

	Council for British Archaeology	01904 671 417	<a href="http://www.britarch.ac.uk">www.britarch.ac.uk</a>	Online Enquiry form
Insects	Amateur Entomologists Society (no current Devon group)		<a href="http://www.amentsoc.org">http://www.amentsoc.org</a>	
	The Bumblebee Conservation Trust	-	<a href="http://www.bumblebeeconservation.org.uk">www.bumblebeeconservation.org.uk</a>	enquiries@bumblebeeconservation.org
	* Butterfly Conservation (+ <i>Devon Branch</i> )	01929 400 209	<a href="http://www.butterfly-conservation.org">www.butterfly-conservation.org</a> <a href="http://www.devon-butterflies.org.uk/Home.htm">www.devon-butterflies.org.uk/Home.htm</a>	info@butterfly-conservation.org
	Buglife	01733 201210	<a href="http://www.buglife.org.uk">www.buglife.org.uk</a>	info@buglife.org.uk
	British Dragonfly Society		<a href="http://www.british-dragonflies.org.uk">http://www.british-dragonflies.org.uk</a>	
	<i>Devon Moth Group</i>		<a href="http://www.devonmothgroup.org.uk">http://www.devonmothgroup.org.uk</a>	
	<i>Devon Dragonfly Group</i>	For up to date contact details please contact Devon Biodiversity Records Centre or try <a href="http://www.dbrc.org.uk/useful-links/">http://www.dbrc.org.uk/useful-links/</a>		
	<b>Local Authorities</b>	* Devon County Council	0845 1551015	<a href="http://www.devon.gov.uk">www.devon.gov.uk</a>
	* East Devon District Council	01395 516551	<a href="http://www.eastdevon.gov.uk">www.eastdevon.gov.uk</a>	Online Enquiry form
	* Exeter City Council	01392 277 888	<a href="http://www.exeter.gov.uk">www.exeter.gov.uk</a>	Online Enquiry form
	Mid Devon District Council	01884 255255	<a href="http://www.middevon.gov.uk">www.middevon.gov.uk</a>	customerfirst@middevon.gov.uk
	North Devon Council	01271 327711	<a href="http://www.northdevon.gov.uk">http://www.northdevon.gov.uk</a>	customerservices@northdevon.gov.uk
	* Plymouth City Council	01752 668000	<a href="http://www.plymouth.gov.uk">www.plymouth.gov.uk</a>	enquiries@plymouth.gov.uk

	* Teignbridge District Council	01626 361101	<a href="http://www.teignbridge.gov.uk">www.teignbridge.gov.uk</a>	info@teignbridge.gov.uk
	South Hams District Council	01803 861234	<a href="http://www.southhams.gov.uk">http://www.southhams.gov.uk</a>	customer.services@southhams.gov.uk
	Torbay Council	01803 201201	<a href="http://www.torbay.gov.uk">http://www.torbay.gov.uk</a>	connections@torbay.gov.uk
	Torridge District Council	01237 428700	<a href="http://www.torridge.gov.uk">http://www.torridge.gov.uk</a>	customer.services@torridge.gov.uk
	West Devon Borough Council	01822 813600	<a href="http://www.westdevon.gov.uk">http://www.westdevon.gov.uk</a>	services@westdevon.gov.uk
Mammals	The Bat Conservation Trust	0845 1300228	<a href="http://www.bats.org.uk">www.bats.org.uk</a>	<a href="mailto:enquiries@bats.org.uk">enquiries@bats.org.uk</a>
	<i>Devon Bat Group</i>		<a href="http://www.dbg.me.uk">www.dbg.me.uk</a>	devonbatgroup@dsl.pipex.com
	The Mammal Society	02380 237874	<a href="http://www.mammal.org.uk">www.mammal.org.uk</a>	enquiries@mammal.org.uk
	<i>Devon Mammal Group</i>	-	<a href="http://www.devonmammalgroup.org">www.devonmammalgroup.org</a>	Online Enquiry Form
	British Hedgehog Preservation Society	01584 890801	<a href="http://www.britishhedgehogs.org.uk">http://www.britishhedgehogs.org.uk</a>	info@britishhedgehogs.org.uk
Marine / coast / estuaries	Devon Maritime Forum	01392 383231	<a href="http://www.devonmaritimeforum.org.uk/">www.devonmaritimeforum.org.uk/</a>	Enquiry form on website
	Exe Estuary Management Partnership	01392 382236	<a href="http://www.exe-estuary.org/">http://www.exe-estuary.org/</a>	exeestua@devon.gov.uk
	Marine Conservation Society		<a href="http://www.mcsuk.org">www.mcsuk.org</a>	
	Sea Watch	0845 202 3892	<a href="http://www.seawatchfoundation.org.uk">www.seawatchfoundation.org.uk</a>	0845 202 3892. E: <a href="mailto:info@seawatchfoundation.org.uk">info@seawatchfoundation.org.uk</a>
	The Shark Trust		<a href="http://www.sharktrust.org">www.sharktrust.org</a>	
	The Seahorse Trust	01404 822373	<a href="http://www.theseahorsetrust.org">www.theseahorsetrust.org</a>	info@theseahorsetrust.org

	Whale and Dolphin Conservation Society	01249 449500	<a href="http://www.wdcs.org.uk">www.wdcs.org.uk</a>	<a href="mailto:info@wdcs.org">info@wdcs.org</a>
<b>National Parks</b>	* Dartmoor National Park	01626 832093	<a href="http://www.dartmoor-mpa.gov.uk">www.dartmoor-mpa.gov.uk</a>	<a href="mailto:hq@dartmoor-mpa.gov.uk">hq@dartmoor-mpa.gov.uk</a>
	* Exmoor National Park	01398 323665	<a href="http://www.exmoor-nationalpark.gov.uk">www.exmoor-nationalpark.gov.uk</a>	<a href="mailto:info@exmoor-nationalpark.gov.uk">info@exmoor-nationalpark.gov.uk</a>
<b>Orchards</b>	Orchard Link (covers largely south and east Devon)	07792 664710	<a href="http://www.orchardlink.org.uk">http://www.orchardlink.org.uk</a>	<a href="mailto:info@orchardlink.org.uk">info@orchardlink.org.uk</a>
	Orchards Live (North Devon and wider Exmoor)	01271 831462	<a href="http://www.orchardslive.org.uk">www.orchardslive.org.uk</a>	
<b>Plants</b>	Flora locale (includes information on suppliers of native plants)	01672 515723	<a href="http://www.floralocale.org">www.floralocale.org</a>	<a href="mailto:info@floralocale.org">info@floralocale.org</a>
	Landlife (founded, and based at, the National Wildflower Centre in Liverpool)	0151 737 1819	<a href="http://www.wildflower.co.uk">http://www.wildflower.co.uk</a>	<a href="mailto:info@landlife.org.uk">info@landlife.org.uk</a>
	Plantlife	01722 342730	<a href="http://www.plantlife.org">www.plantlife.org</a>	<a href="mailto:enquiries@plantlife.org.uk">enquiries@plantlife.org.uk</a>
	Botanical Society of the British Isles (BSBI)		<a href="http://www.bsbi.org.uk">http://www.bsbi.org.uk</a>	
<b>Ponds</b>	Pond Conservation (website includes advice on wildlife ponds)	01865 483249	<a href="http://www.pondconservation.org.uk">http://www.pondconservation.org.uk</a>	<a href="mailto:info@pondconservation.org.uk">info@pondconservation.org.uk</a>
<b>Schools</b>	See 'Education' pages on DWT website.		<a href="http://www.devonwildlifetrust.org/resources">www.devonwildlifetrust.org/resources</a>	
<b>Wildlife records / mapping</b>	National Biodiversity Network	-	<a href="http://www.nbn.org.uk">www.nbn.org.uk</a>	-
	Devon Biodiversity Records Centre	01393 274128	<a href="http://www.dbrc.org.uk">www.dbrc.org.uk</a>	<a href="mailto:DBRC@dbrc.org.uk">DBRC@dbrc.org.uk</a>
	Multi-Agency Geographic Information for the Countryside (MAGIC)	-	<a href="http://www.magic.gov.uk">www.magic.gov.uk</a>	
	Nature on the map (Natural England's interactive mapping website)	-	<a href="http://www.natureonthemap.org.uk">www.natureonthemap.org.uk</a>	

Wildlife gardening	Wild About Gardens + the Big Wildlife Garden (two projects run by the Royal Horticultural Society and the Wildlife Trusts)	-	<a href="http://www.wildaboutgardens.org">http://www.wildaboutgardens.org</a> <a href="http://www.bigwildlifegarden.org.uk">http://www.bigwildlifegarden.org.uk</a>	contactus@wildaboutgardens.org.uk
	Natural England wildlife gardening information		<a href="http://www.naturalengland.org.uk/advice/wildlifegardening/default.aspx">http://www.naturalengland.org.uk/advice/wildlifegardening/default.aspx</a>	
Woodlands	Blackdown and East Devon Woodland Association	-	<a href="http://www.woodbiz.co.uk">http://www.woodbiz.co.uk</a>	admin@woodbiz.co.uk
	* Forestry Commission	01392 832262	<a href="http://www.forestry.gov.uk">www.forestry.gov.uk</a>	enquiries.peninsula@forestry.gsi.gov.uk
	Small Woods Association	01952 432769	<a href="http://www.smallwoods.org.uk">http://www.smallwoods.org.uk</a>	Online enquiry form
	The Silvanus Trust (working to regenerate woodlands in the South West. Website includes useful woodland / forestry links)	01752 846 400	<a href="http://www.silvanustrust.org.uk">www.silvanustrust.org.uk</a>	info@silvanustrust.org.uk
	Devon Ward Forester Project (encouraging small woodland owners to work together)	01392 382221	<a href="http://wardforester.co.uk/?page_id=4">http://wardforester.co.uk/?page_id=4</a>	wardforester@devon.gov.uk
	* Woodland Trust	01476 581135	<a href="http://www.woodlandtrust.org">www.woodlandtrust.org</a>	enquiries@woodlandtrust.org.uk
	Tree Council	0207 4079992	<a href="http://www.treecouncil.org.uk">www.treecouncil.org.uk</a>	info@treecouncil.org.uk



# Acknowledgements



## Acknowledgements



Section 4 and information on funding was written by Acorn Ecology Ltd. Contact: 01392 682401, [www.acornecology.co.uk](http://www.acornecology.co.uk), [info@acornecology.co.uk](mailto:info@acornecology.co.uk)

Other sections were produced by Devon County Council with help from Groundwork South West and the Community Council of Devon

Design, illustrations and photographs included in this document supplied by Walks Far Photography. All photographs and illustrations are of flora and fauna found in Devon.

For further information please visit <http://www.walksfarphotography.co.uk>

Case study photographs have been supplied by Groundworks and Martin Rich.

